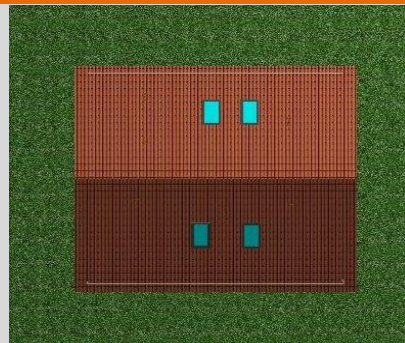
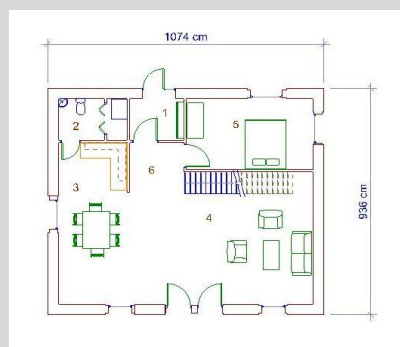




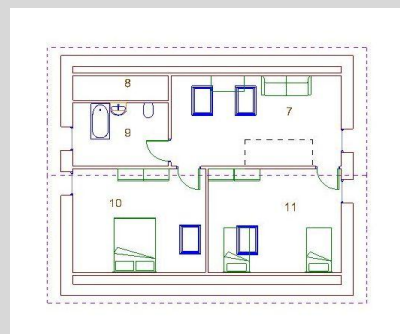
RZUT DACHU



RZUT PARTERU



RZUT PODDASZA



- | | |
|-----------------------------|----------------------|
| 1. POM. GOSP. 3,6 M2 | 7. POKÓJ 11,9 M2 |
| 2. SALON 41,6 M2 | 8. KOMUN. 2,4 M2 |
| 3. KUCHNIA JADALNIA 14,4 M2 | 9. WIATROŁAP 5,4 M2 |
| 4. TECHN. GOSP. 1,9 M2 | 10. GARDEROBA 5,5 M2 |
| 5. ŁAZIENKA 7,0 M2 | |
| 6. POKÓJ 10,7 M2 | |
| 11. WYPOCZYNEK 34,7/42,6 M2 | |
| 12. ŁAZIENKA 2,8/5, M2 | |
| 13. POKÓJ 17,4/20,6 M2 | |
| 14. POKÓJ 17,4/20,6 M2 | |